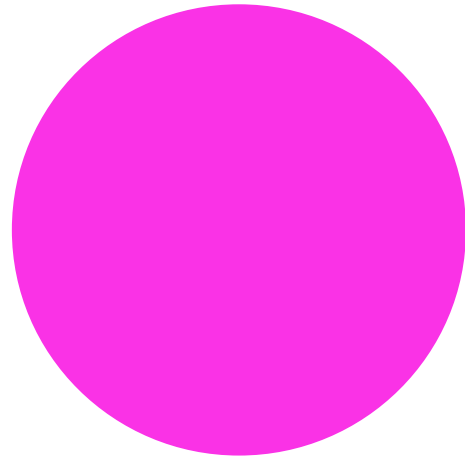




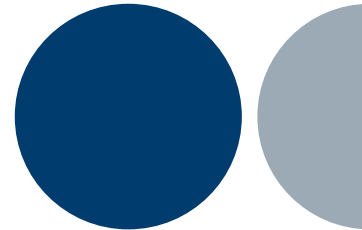
reintel

A Redeia company



An essential company to achieve
widespread connectivity

We are the largest neutral operator of dark
fibre optic infrastructure in Spain.



Dark fibre
optic backbone
network



Sites for housing
equipment

Dedicated cable
and customised
solutions



redeia

Redeia is the global manager of essential infrastructures. A driver of the energy transition and universal connectivity.

Operates the Spanish electricity system and manages electricity and telecommunications networks (fibre optics and satellites), with a focus on innovation and sustainability.



Redeia's international presence

- ✘ Apart from Spain, Peru, Chile, Brazil and Colombia, Redeia is present in: Mexico, Germany, Ecuador, Great Britain, Greece, Argentina, South Africa, Luxembourg, Senegal, Belgium and United States.
- Satellite coverage area.

red eléctrica

Backbone of the energy transition and guarantee of a secure, quality and increasingly renewable electricity supply.

reintel

Largest provider of dark fibre in Spain, essential for offering widespread connectivity.

hispasat

Leading player in the digital transformation and the reduction of the digital divide in Spain and Latin America.

redinter

Driving force behind the de-carbonisation of the energy model and sustainable development in Latin America.

elewit

Technology innovation platform fostering the energy transition and connectivity.



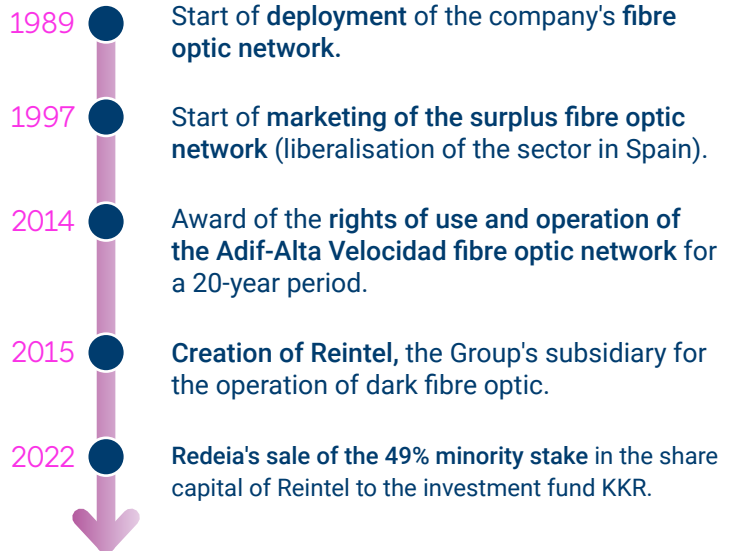
Reintel is a subsidiary owned 51% by Redeia and 49% by the KKR investment fund*.

We are the largest neutral operator of dark fibre optic infrastructure in Spain, and an essential company for achieving universal connectivity.

Our core business is the rental and maintenance of an extensive dark fibre optic network deployed over the electricity transmission grid and the railway network, as well as sites and technical spaces for housing electronic equipment that we provide to the main telecommunications operators in Spain.



Milestones





What is our business?

We operate the largest dark fibre optic network, with the highest quality.

- We manage a wide, meshed and redundant fibre optic backbone network with connections to island and international access systems, with interconnection points with France, Portugal, Morocco and Andorra.
- We have sites and technical spaces located throughout Spain for housing electronic equipment used for signal regeneration, insertion and extraction.
- We provide capillarity and access to customers' trunk or metropolitan transmission grids by constructing specific dark fibre optic sections.
- We provide maintenance services for Red Eléctrica's fibre optic network and telecommunications equipment.

We have the most appropriate infrastructures and tools to achieve widespread connectivity.



How do we do it?

We prioritise excellence and continuous investment in infrastructure improvement.

- We ensure excellence in infrastructure operations and maintenance processes.
- We have a permanent 24-hour, year-round service and monitoring centre.
- We have a plan for the development, renewal and improvement of infrastructures, equipment and sites.
- We design tailored solutions, accompanying our clients in their growth and development:
 - Multi-site projects.
 - Connectivity with neutral points.
 - Access to data processing centres.
 - Network integration.
 - Redundant rings.
 - Peninsular transit of international networks.
 - Deployment of infrastructures on demand.

Who do we work for?

We make our infrastructures available to the main telecommunications operators present in Spain.

- International operators.
- National operators.
- Regional and local operators.
- Utility companies.
- Network and system integrators.
- Data Centres, ISPs and OTTs.
- Public Administrations.



Sustainable management



Customer Orientation

We provide the best solution in a flexible and creative environment.



Neutrality

We guarantee transparent and neutral access to our fibre optic network.



Excellence

We prioritise excellence, ensuring high levels of service quality and availability.

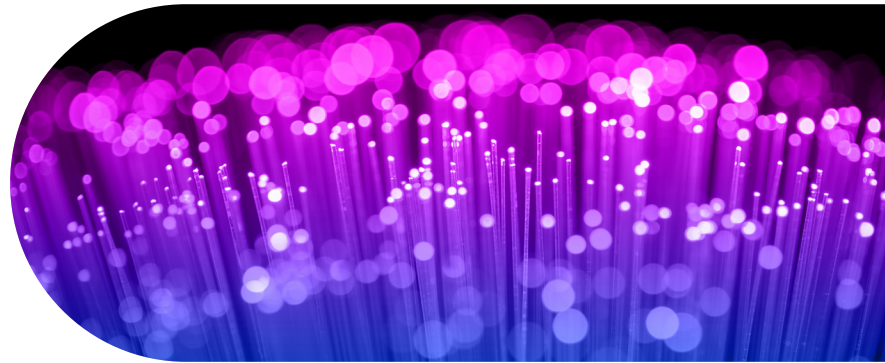


Experience

We are backed by over 30 years' experience in the operation of critical infrastructures (electricity system and railway network).



Reintel is certified in the Environmental Management System in accordance with the ISO 14001 standard.



Reintel in figures (2023)



150 M€ in revenues



> 52,000 km of fibre optic network
41 interconnections



1,344 sites
810 electrical
534 railway



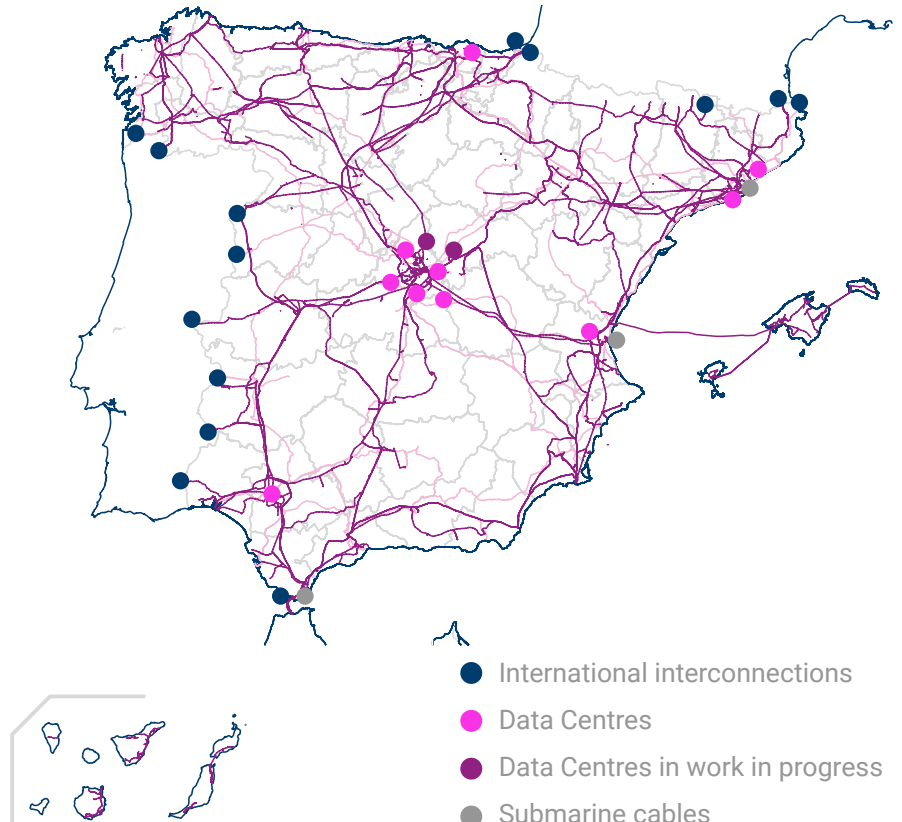
50 provinces covered

Our backbone network

Backbone network formed by integrating the surplus fibre optic network of the electricity transmission grid, which belongs to Red Eléctrica, and the fibre network not dedicated to Adif's long-distance rail service.

- Secure and reliable backbone network.
- Meshed and interconnected.
- National coverage.
- Island connection and international access.
- Cable redundancy: underground (railway environment) and aerial/ submarine/ underground (electrical environment).

The largest dark fibre optic network in Spain enables Portugal, France, and Africa to be connected to the main data processing centres in the country with the maximum level of redundancy and reliability available in the market.



Our sites

Sites for housing equipment

We have multiple strategically distributed locations to provide the best response to our customers' technical requirements.



Electrical environment

Telecommunications cabins located next to electricity substations distributed throughout the high-voltage transmission grid.



Railway environment

Telecommunications stations strategically distributed along the railway backbone and metropolitan areas.

redeia

Valuing the essentials

red eléctrica reintel hispasat redinter elewit

www.redeia.com

www.reintel.es/en